

**DIRECTIONS:** From the airport go north on Pacific approximately 3 miles (you will pass the Yuma Palms Shopping Center). Continue north to the stop sign. Turn left on Giss Parkway and continue to Maiden Lane. Turn right and go 2 blocks and park in the lot behind Lute's Casino for Thursday registration. To get to the Coronado Hotel and the Regal Lodge stay on the Giss Parkway and turn right at the light on 4th Avenue for the Coronado and left for the Regal. Both hotels will be in sight.

**INFORMATION:** For pre-symposium questions go to [www.yumasymposium.org](http://www.yumasymposium.org) or contact: Neely Tomkins, Yuma Symposium Executive Director, 78 West 2nd Street, Yuma AZ 85364 Tel: (928) 782-1934 • Email: [neelyandgeorge@gmail.com](mailto:neelyandgeorge@gmail.com)

**HOTELS**

- Hilton Pivot Point Garden Inn ..... 928-783-1500
- Fairfield Inn ..... 928-345-1800
- Radisson Hotel ..... 928-783-8000
- Best Western Coronado ..... 928-783-4453
- Regal Lodge ..... 928-782-4571

# YUMA SYMPOSIUM 34 2013 Registration Form

Register online at [www.yumasymposium.org](http://www.yumasymposium.org)

\_\_\_\_\_

first name \_\_\_\_\_ last name \_\_\_\_\_

\_\_\_\_\_

street \_\_\_\_\_

\_\_\_\_\_

city \_\_\_\_\_ state \_\_\_\_\_ zip \_\_\_\_\_

\_\_\_\_\_

telephone \_\_\_\_\_

\_\_\_\_\_

email \_\_\_\_\_

**Admission** (choose one)     \$150 General Public     \$80 Student

**Form of Payment**     Check     Cash     Visa     MC

Make checks payable to YAS, Inc.

\_\_\_\_\_

card number (Mastercard & Visa only please) \_\_\_\_\_

expiration date \_\_\_\_\_

\_\_\_\_\_

name as it appears on the credit card \_\_\_\_\_

Mail to: Yuma Symposium c/o Neely Tomkins, 78 W 2nd Street, Yuma, AZ 85364

## FOYS FRIENDS OF THE YUMA SYMPOSIUM

Your becoming a Friend enables the symposium to be self supporting. This goal will ensure the quality and the future of this unique event. YAS Inc. is a nonprofit 501(c)(3). Donations are considered tax deductible to the extent allowable by law.

**Make a donation online at [www.yumasymposium.org](http://www.yumasymposium.org)**

- FRIENDS CONTRIBUTION**
- McCune Memorial Photography Fund**
- \$25     \$50     \$100     \$250 plus

\_\_\_\_\_

first name \_\_\_\_\_ last name \_\_\_\_\_

\_\_\_\_\_

street \_\_\_\_\_

\_\_\_\_\_

city \_\_\_\_\_ state \_\_\_\_\_ zip \_\_\_\_\_

\_\_\_\_\_

email \_\_\_\_\_

Mail to: Yuma Symposium  
c/o Neely Tomkins, 78 W 2nd Street, Yuma, AZ 85364  
Make checks payable to YAS, Inc.

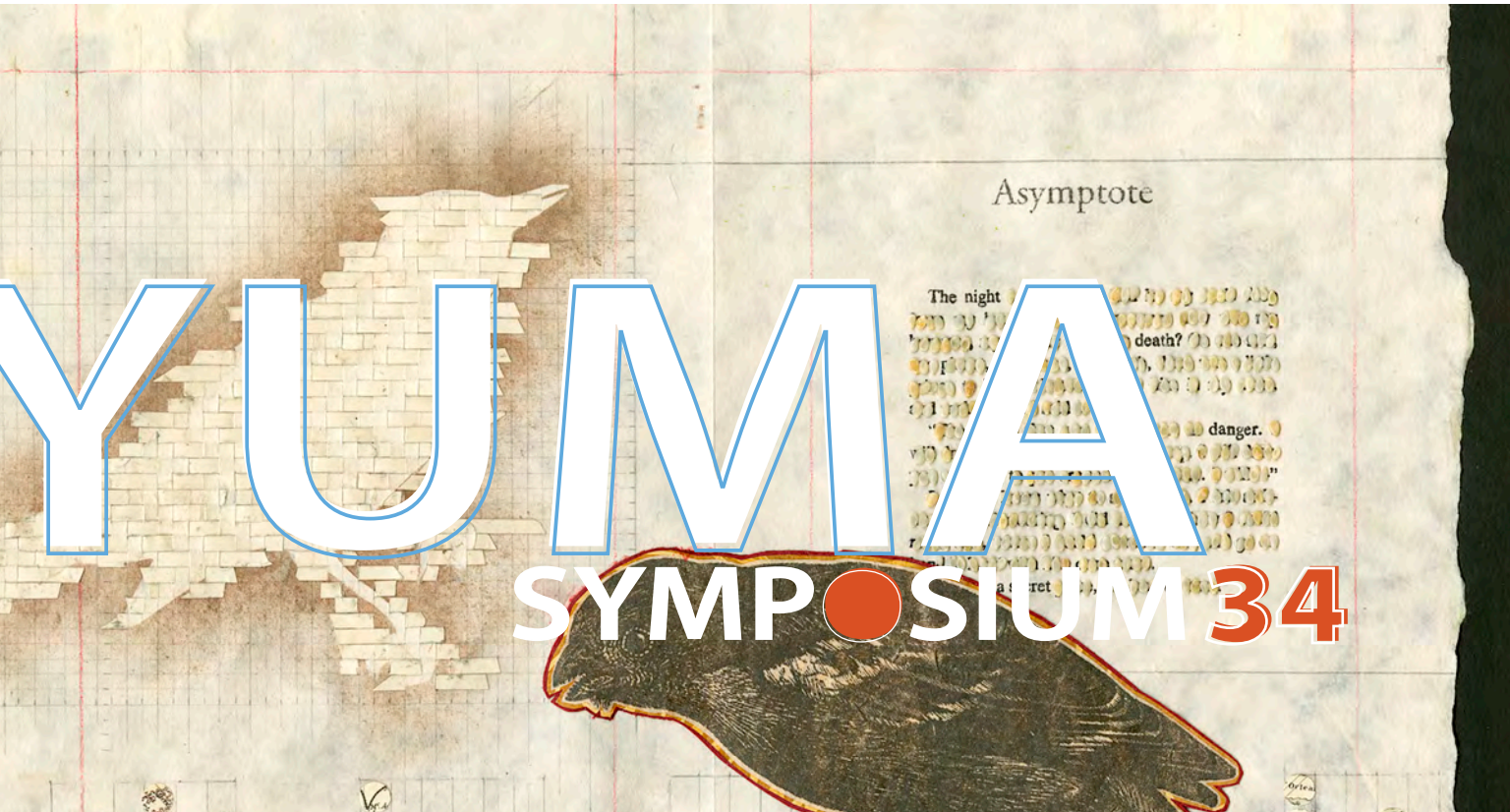
# YUMA SYMPOSIUM 34

c/o 78 West 2nd Street, Yuma, Arizona 85364

Address correction requested

**Sponsored by:**

- The City of Yuma
- The Yuma Art Center
- Arizona Western College
- Friends of Yuma Symposium
- Tomkins Pottery
- The Gowan Company
- Yuma Fine Arts Association
- NexGen



# YUMA SYMPOSIUM 34

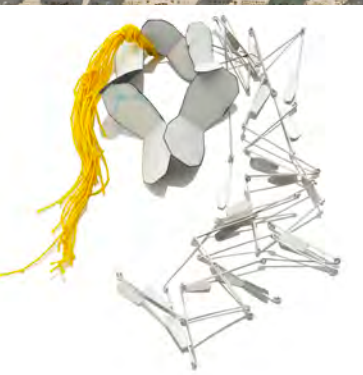
February 21-23, 2013

[www.yumasymposium.org](http://www.yumasymposium.org)



# YUMA SYMPOSIUM 34

The Yuma Symposium is a series of demonstrations, lectures and visual presentations given by both internationally recognized and emerging artists who have demonstrated unusual talent. Activities include an exhibit of work by presenters and a student show, the National Saw, File, & Solder Sprints, the annual pin auction, and a fiesta and dance on Saturday night. The 34th Yuma Symposium begins on Thursday, Feb. 21, 2013 with registration, a social gathering and the traditional pin swap from 3:30 - 6:30 p.m. at Lute's Casino, 221 S Main Street. Orientation and informal introductions of the presenters will follow at 7 pm at the Yuma Theater.



## Exhibitions and Events:

**PIN SWAP** For 34 years participants have made pins, usually in their preferred medium, ranging from the goofy to the sublime. The best access to and selection of pins will be at registration at Lute's Casino on Thursday. However, pins are traded and sold throughout the symposium.

**PIN AUCTION** Invited artists exhibit handmade small works of art that are auctioned (silently) during the opening of the exhibition on Friday evening. This is a great opportunity to add to your contemporary art collection. Many of the top artists in the country donate to the auction. Proceeds benefit the Friends of the Yuma Symposium.

**SAW, FILE & SOLDER SPRINTS** Three-person relay teams usually, but not necessarily, skilled in metals convert the making of a simple ring into an exciting sports event. Naturally, gorgeous trophies will be awarded to the winning teams. Put a team together and challenge the champs!

**STUDENT EXHIBITION** Registered student symposium participants are encouraged to show a single "installation-ready" work in the student exhibition, which is displayed concurrently with the presenter exhibition Friday evening.

**ONLINE REGISTRATION!** All Student show submissions **MUST** be registered online **before midnight on February 17, 2013** to be included in the exhibition. If you have not registered online by the deadline you will not have work in the exhibition! To register go to [www.yumasymposium.org](http://www.yumasymposium.org) and click on Student Exhibition

**SHOW YOUR STUFF** (aka Slide Abuse) This is a fun-filled event for any willing symposium participant who appreciates a diversity in aesthetic approaches. Short presentations of 5 minutes or less with slides or digital images can be presented. Carousels will be provided. Digital should be CD on Powerpoint 2004. See website for more information.

**PRE-SYMPOSIUM AT ARIZONA WESTERN COLLEGE Thursday Feb 21**  
Arizona Western College, in conjunction with the Yuma Symposium, hosts the "Pre-Symposium Day at AWC" on Thursday morning and early afternoon. Four presenters will give previews of their symposium presentations free to the public. See our website for names, times and locations.

## Presenters:

**Dean Adams**  
Hot Thoughts: Connecting the Kiln, Clay, and Concept

**Joe Bova**  
Going Beyond Zebra

**Nancy Mēgan Corwin**  
A Survey of Chasing and Repoussé – Ancient to Contemporary

**Kathleen Crocetti**  
The Tom Sawyer Effect: How a Bossy Extrovert with OCD Gets Others to Pay for and Do the Dirty Work

**Deborah Ford**  
Cartography and the Cultural Terrain II

**Alison Pack**  
Clichés in Metal

**Eric Renner** presenting with Nancy Spencer  
Working Collaboratively: Pinhole, Zone Plate, and Assemblage Photography

**Lisa Beth Robinson**  
Seeds and Stories: Material Narrative in the Alternative Book Structure

**Rose Sellery**  
Confessions of a Lopsided Sole

**Nancy Spencer** presenting with Eric Renner  
Working Collaboratively: Pinhole, Zone Plate, and Assemblage Photography

**Inez Storer**  
Working Title: A Long Life After Art School

**Amy Tavern**  
Observation/Translation: 90 Days in Belgium

**Kerry Vesper**  
Wood Art: Saw, Clamp, Grind and Sand. . . Then Sand Some More

Get more information on each of our 13 presenters at [www.yumasymposium.org](http://www.yumasymposium.org)



## SYMPOSIUM SCHEDULE

**Thursday Feb 21, 2013**  
Registration & Social Gathering at Lutes' Casino 3:30 - 6:30pm  
Belly up to the bar and swap some pins!

Introduction of Presenters and Orientation 7:00pm  
Historic Yuma Theater

**Friday Feb 22, 2013**  
Registration (continues) 8:00 - 12:00 noon  
78 W 2nd Street  
Presentations All day

**Friday evening**  
Presenter Exhibition, Student Show, Pin Auction  
Show Your Stuff TBA

**Saturday Feb 23, 2013**  
Registration (continues) 8:00 - 10:00  
78 W 2nd Street

Presentations All day  
Saw, File, & Solder Sprints Saturday afternoon  
Annual Dinner and Dance Saturday evening

